

ARCHITECTURE | ENGINEERING | CONSTRUCTION MANAGEMENT SERVICES

GALWAY CENTRAL SCHOOL DISTRICT

MARCH 1 and MARCH 8, 2016 | PUBLIC INFORMATION SESSIONS

**GALWAY CENTRAL
SCHOOL DISTRICT**

Shannon Shine
Superintendent of Schools
518.882.1033 x3220



AGENDA

HOW DID WE GET HERE?

WHAT'S INCLUDED?

HOW MUCH WILL IT COST?

WHAT ARE THE NEXT STEPS?

PLEASE ASK US QUESTIONS

Agenda

- How Did We Get Here?
 - Schedule to date
 - Facility Evaluation Resources
- What's Included?
 - Health, Safety and Accessibility
 - Infrastructure
 - Energy Saving Measures
 - Community Stakeholder Input
- How Much Will It Cost?
- What Are The Next Steps?
- Please Ask Us Questions!

GALWAY CENTRAL SCHOOL DISTRICT

Shannon Shine
Superintendent of Schools
518.882.1033 x3220

Turner
Building the Future

CSArch

AGENDA

HOW DID WE GET HERE?

WHAT'S INCLUDED?

HOW MUCH WILL IT COST?

WHAT ARE THE NEXT STEPS?

PLEASE ASK US QUESTIONS

How Did We Get Here?

FACILITY EVALUATION RESOURCES

- Building Condition Survey
- District Five Year Plan
- District Administration
- District Staff
- Other Facility Users
- Community and Stakeholders

GALWAY CENTRAL SCHOOL DISTRICT

Shannon Shine
Superintendent of Schools
518.882.1033 x3220



AGENDA

HOW DID WE GET HERE?

WHAT'S INCLUDED?

HOW MUCH WILL IT COST?

WHAT ARE THE NEXT STEPS?

PLEASE ASK US QUESTIONS

GALWAY CENTRAL SCHOOL DISTRICT

Shannon Shine
Superintendent of Schools
518.882.1033 x3220



How Did We Get Here?

SCHEDULE TO DATE

- | | |
|--------------------------------------|--------------------------|
| • BCS Observations & Energy Analysis | Summer '14 – Spring 2015 |
| • Bi-Weekly Committee Meetings | Spring 2015 – Current |
| • BCS Presentation to the BOE | June 24, 2015 |
| • BOE Update | September 24, 2015 |
| • Community Forum #1 | October 1, 2015 |
| • Community Forum #2 | November 3, 2015 |
| • Community Forum #3 | December 2, 2015 |
| • BOE Update | December 10, 2015 |
| • BOE Update | February 11, 2016 |
| • Public Information Session | March 1, 2016 |
| • Public Information Session | March 8, 2016 |

AGENDA

HOW DID WE GET HERE?

WHAT'S INCLUDED?

HOW MUCH WILL IT COST?

WHAT ARE THE NEXT STEPS?

PLEASE ASK US QUESTIONS

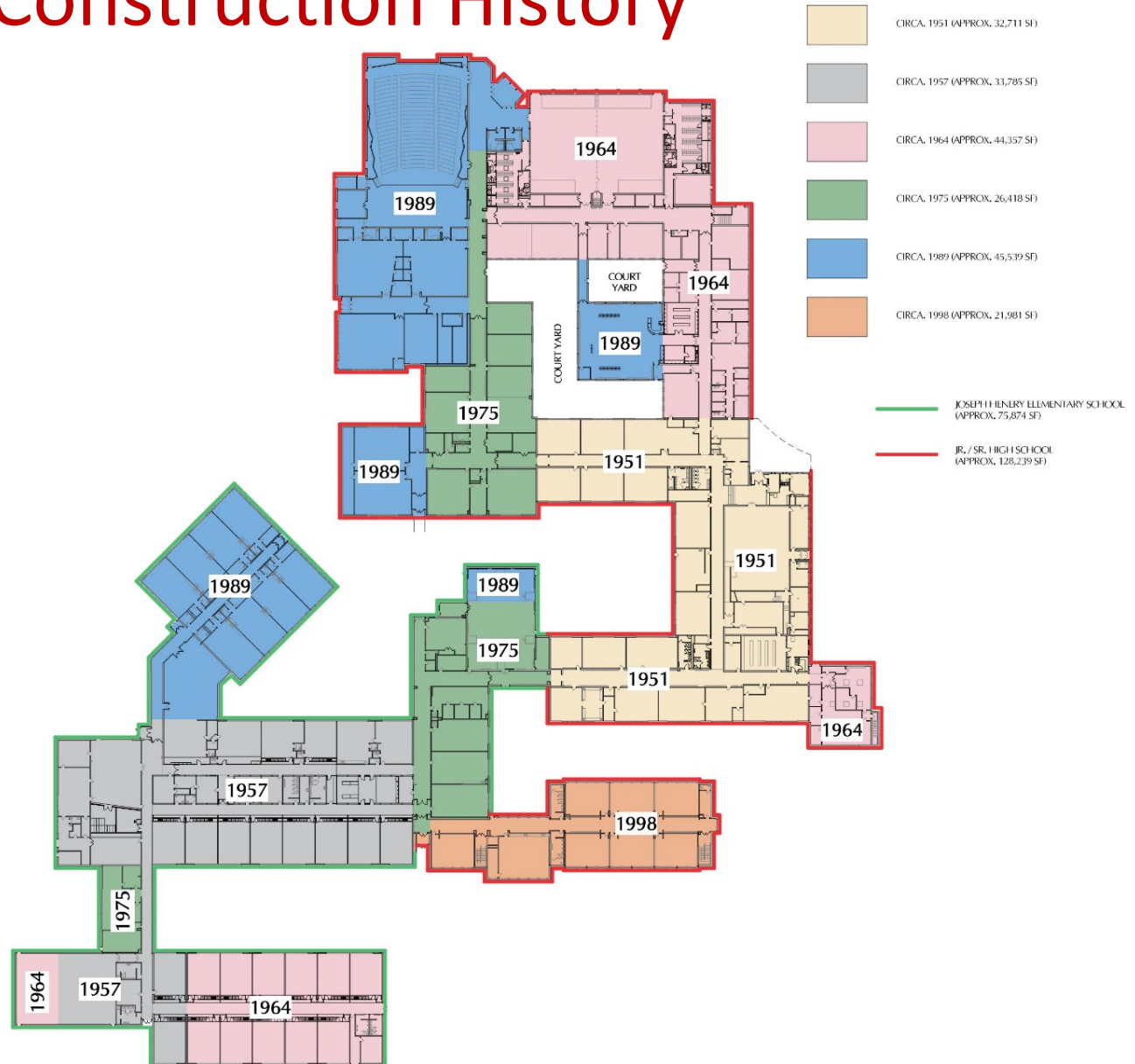
GALWAY CENTRAL SCHOOL DISTRICT

Shannon Shine
Superintendent of Schools
518.882.1033 x3220

Turner
Building the Future

CSArch

Construction History



AGENDA

HOW DID WE GET HERE?

WHAT'S INCLUDED?

HOW MUCH WILL IT COST?

WHAT ARE THE NEXT STEPS?

PLEASE ASK US QUESTIONS

What's Included?

GENERAL CATEGORIES OF NEED:

- Health, Safety and Accessibility
- Infrastructure
- Energy Saving Measures
- Community Stakeholder Input

GALWAY CENTRAL SCHOOL DISTRICT

Shannon Shine
Superintendent of Schools
518.882.1033 x3220



AGENDA

HOW DID WE GET HERE?

WHAT'S INCLUDED?

HOW MUCH WILL IT COST?

WHAT ARE THE NEXT STEPS?

PLEASE ASK US QUESTIONS

Health, Safety & Accessibility

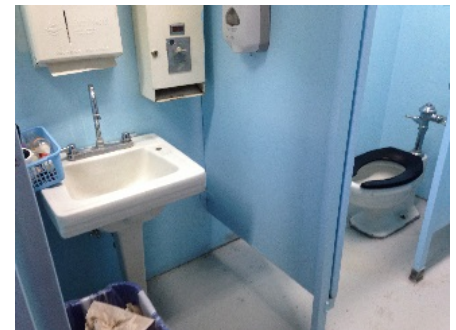
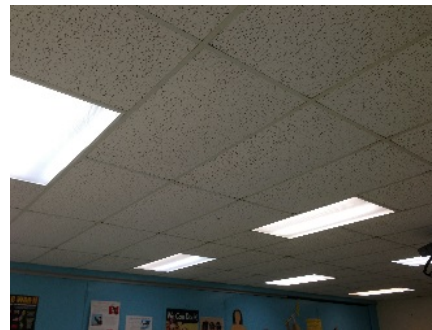
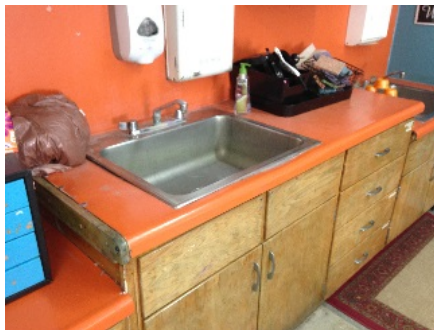
- Door and door hardware replacement
- Improve exterior lighting levels
- Sidewalk replacement
- Floor finish replacement – Vinyl Asbestos Tile (VAT)
- Masonry restoration
- Toilet room renovations (ADA compliance and condition)
- Cabinetry replacement
- Provide ADA compliant ramp from ES to track
- Create a canopy over the loading dock
- Replace exit/emergency lighting
- Egress window replacement
- Bus Drop-Off / Pick-Up Reconfiguration

GALWAY CENTRAL SCHOOL DISTRICT

Shannon Shine
Superintendent of Schools
518.882.1033 x3220

Turner
Building the Future

CSArch



AGENDA

HOW DID WE GET HERE?

WHAT'S INCLUDED?

HOW MUCH WILL IT COST?

WHAT ARE THE NEXT STEPS?

PLEASE ASK US QUESTIONS

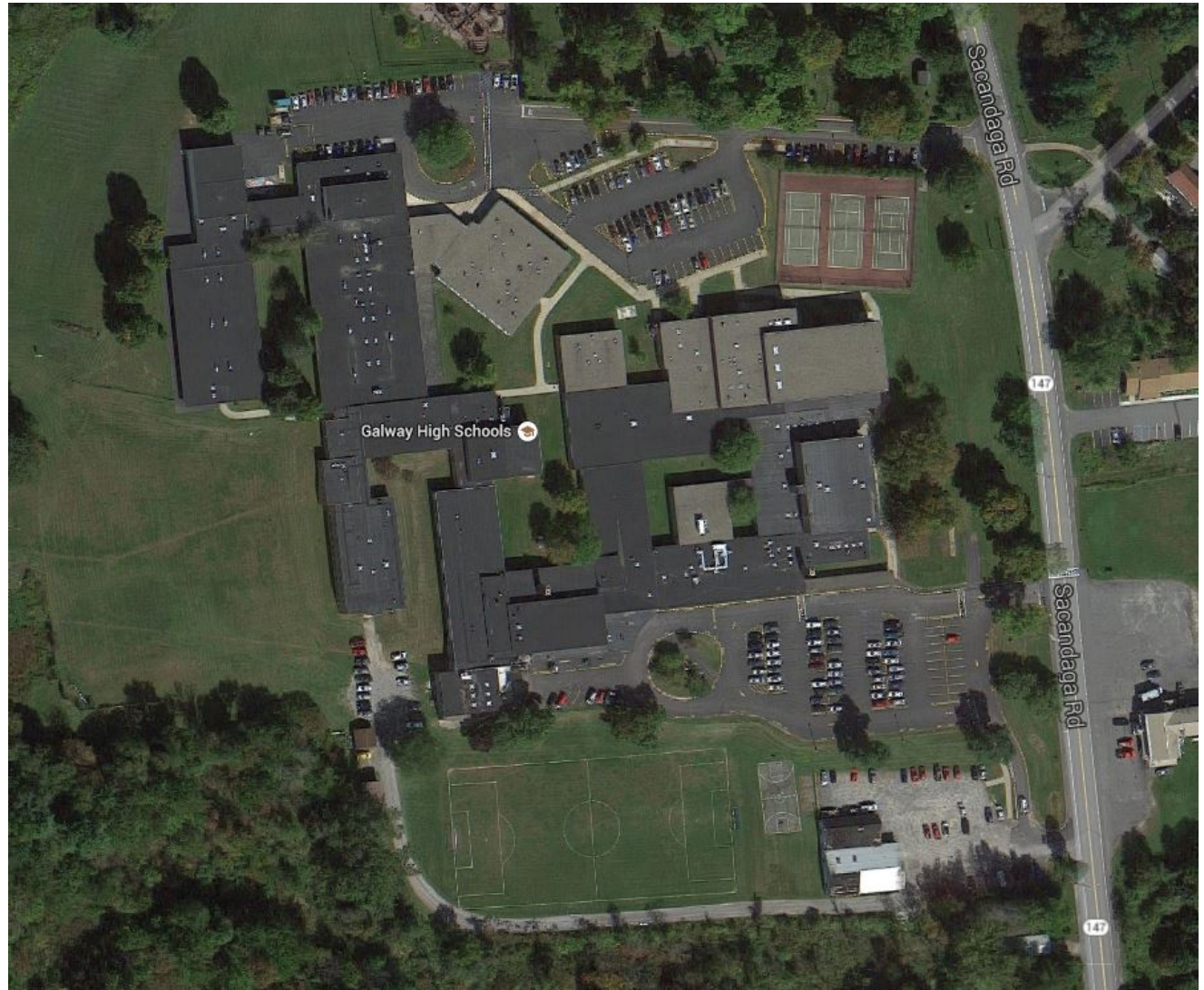
GALWAY CENTRAL SCHOOL DISTRICT

Shannon Shine
Superintendent of Schools
518.882.1033 x3220

Turner
Building the Future

CSArch

Existing Campus



AGENDA

HOW DID WE GET HERE?

WHAT'S INCLUDED?

HOW MUCH WILL IT COST?

WHAT ARE THE NEXT STEPS?

PLEASE ASK US QUESTIONS

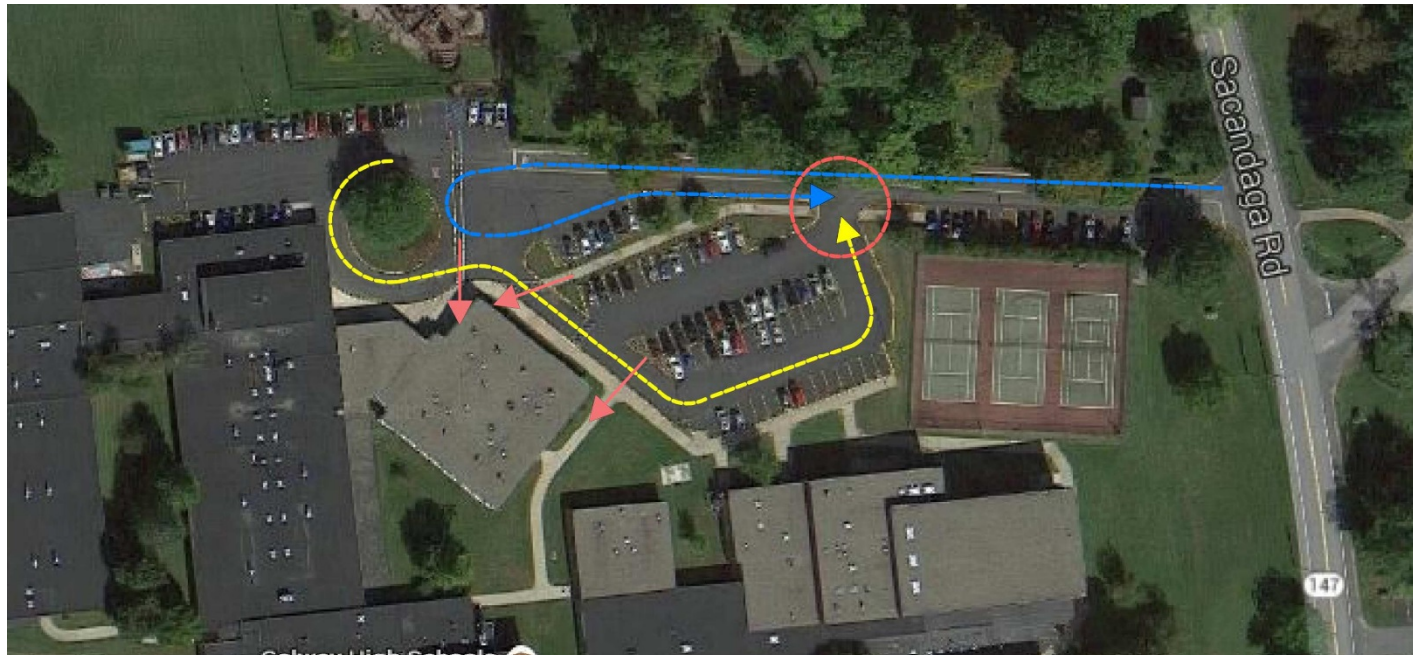
Existing Site Congestion

GALWAY CENTRAL SCHOOL DISTRICT

Shannon Shine
Superintendent of Schools
518.882.1033 x3220

Turner
Building the Future

CSArch



AGENDA

HOW DID WE GET HERE?

WHAT'S INCLUDED?

HOW MUCH WILL IT COST?

WHAT ARE THE NEXT STEPS?

PLEASE ASK US QUESTIONS

Student / Pedestrian / Bus Safety



GALWAY CENTRAL SCHOOL DISTRICT

Shannon Shine
Superintendent of Schools
518.882.1033 x3220

Turner
Building the Future

CSArch

AGENDA

HOW DID WE GET HERE?

WHAT'S INCLUDED?

HOW MUCH WILL IT COST?

WHAT ARE THE NEXT STEPS?

PLEASE ASK US QUESTIONS

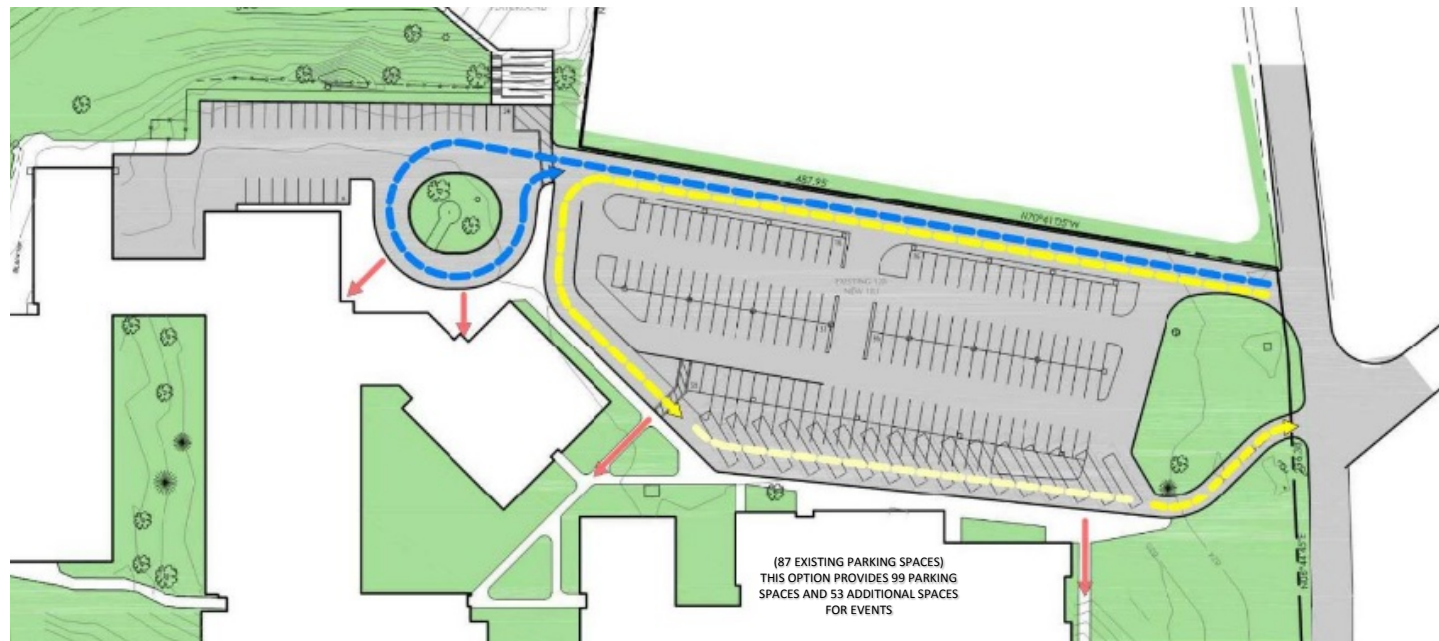
GALWAY CENTRAL SCHOOL DISTRICT

Shannon Shine
Superintendent of Schools
518.882.1033 x3220

Turner
Building the Future

CSArch

New Possibilities – Site Safety



AGENDA

HOW DID WE GET HERE?

WHAT'S INCLUDED?

HOW MUCH WILL IT COST?

WHAT ARE THE NEXT STEPS?

PLEASE ASK US QUESTIONS

GALWAY CENTRAL SCHOOL DISTRICT

Shannon Shine
Superintendent of Schools
518.882.1033 x3220

Turner
Building the Future

CSArch

New Possibilities – Site Safety



AGENDA

HOW DID WE GET HERE?

WHAT'S INCLUDED?

HOW MUCH WILL IT COST?

WHAT ARE THE NEXT STEPS?

PLEASE ASK US QUESTIONS

GALWAY CENTRAL SCHOOL DISTRICT

Shannon Shine
Superintendent of Schools
518.882.1033 x3220

Turner
Building the Future

CSArch

New Possibilities – Site Safety

LED



AGENDA

HOW DID WE GET HERE?

WHAT'S INCLUDED?

HOW MUCH WILL IT COST?

WHAT ARE THE NEXT STEPS?

PLEASE ASK US QUESTIONS

New Possibilities – Site Safety



GALWAY CENTRAL SCHOOL DISTRICT

Shannon Shine
Superintendent of Schools
518.882.1033 x3220

Turner
Building the Future

CSArch

AGENDA

HOW DID WE GET HERE?

WHAT'S INCLUDED?

HOW MUCH WILL IT COST?

WHAT ARE THE NEXT STEPS?

PLEASE ASK US QUESTIONS

Infrastructure

- Roofing replacement - Partial
- Door and door hardware replacement
- Sidewalk and paving replacement
- Ceiling replacement
- Floor finish replacement – Vinyl Composite Tile (VCT), carpet, terrazzo
- Window replacement
- Toilet room renovations
- Cabinetry replacement
- Replace ES gym divider wall
- Replace metal panel wall system at ES gym, renovate equipment
- Replace High School Gymnasium floor

GALWAY CENTRAL SCHOOL DISTRICT

Shannon Shine
Superintendent of Schools
518.882.1033 x3220

Turner
Building the Future

CSArch



AGENDA

HOW DID WE GET HERE?

WHAT'S INCLUDED?

HOW MUCH WILL IT COST?

WHAT ARE THE NEXT STEPS?

PLEASE ASK US QUESTIONS

GALWAY CENTRAL SCHOOL DISTRICT

Shannon Shine
Superintendent of Schools
518.882.1033 x3220

Turner
Building the Future

CSArch

Infrastructure

- Mechanical system upgrades:
 - Boiler replacements
 - Unit ventilator replacements
 - Air handler replacements
 - Provide ventilation to all interior occupied spaces and corridors
 - Provide digital equipment controls
- Electrical system upgrades:
 - Panel replacements
 - Lighting replacements
 - Connect generator at bus garage
- Plumbing system upgrades:
 - Water piping replacement
 - Storm and sanitary piping replacement
 - Fixture and faucet replacements
 - Well house replacement/improvements
 - Isolation valve replacements



AGENDA

HOW DID WE GET HERE?

WHAT'S INCLUDED?

HOW MUCH WILL IT COST?

WHAT ARE THE NEXT STEPS?

PLEASE ASK US QUESTIONS

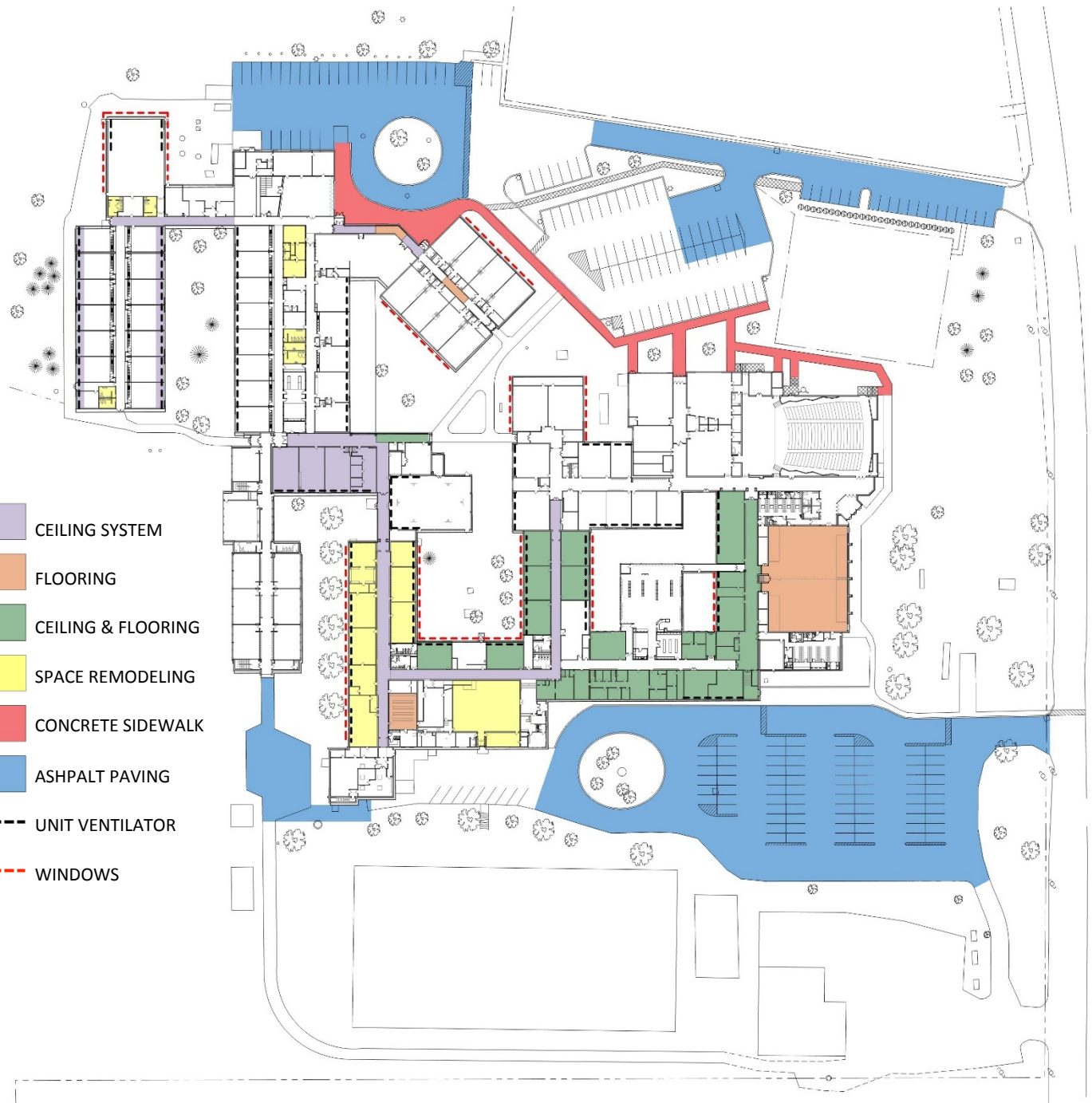
GALWAY CENTRAL SCHOOL DISTRICT

Shannon Shine
Superintendent of Schools
518.882.1033 x3220

Turner
Building the Future

CSArch

-  CEILING SYSTEM
-  FLOORING
-  CEILING & FLOORING
-  SPACE REMODELING
-  CONCRETE SIDEWALK
-  ASPHALT PAVING
-  UNIT VENTILATOR
-  WINDOWS



AGENDA

HOW DID WE GET HERE?

WHAT'S INCLUDED?

HOW MUCH WILL IT COST?

WHAT ARE THE NEXT STEPS?

PLEASE ASK US QUESTIONS

Energy Saving Measures

- Replace 1987 hot water boilers with condensing boilers and convert 2007 steam boilers to hot water
 - Replace air handling units at gyms and auditorium, include demand control ventilation controls
 - Convert water pumps to variable speed
 - Replace classroom unit ventilators, include multi-speed fans
 - Replace exterior lighting with LED
 - Replace interior lighting with LED fixtures and occupancy sensors
-
- The BOE has authorized a Power Purchase Agreement to provide a ground mount photovoltaic array (PV) at the bus garage property as part of the K-Solar Program at no cost to the district

**GALWAY CENTRAL
SCHOOL DISTRICT**

Shannon Shine
Superintendent of Schools
518.882.1033 x3220

Turner
Building the Future

CSArch

AGENDA

HOW DID WE GET HERE?

WHAT'S INCLUDED?

HOW MUCH WILL IT COST?

WHAT ARE THE NEXT STEPS?

PLEASE ASK US QUESTIONS

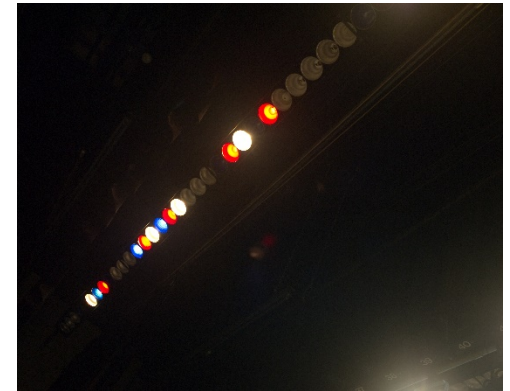
GALWAY CENTRAL SCHOOL DISTRICT

Shannon Shine
Superintendent of Schools
518.882.1033 x3220



Community Stakeholder Input

- Provide Auditorium air conditioning
- Auditorium seating, sound & stage lighting replacement
- Re-grade softball field outfield
- Re-surface track
- Provide irrigation at baseball/soccer/softball fields
- Replace Maintenance Building with smaller storage structures
- Replace chalk boards with white boards
- Renovate 1951 building vintage, primarily HS Art/Home and Careers and Special Education classrooms
- Renovate HS Cafeteria
- Provide door openers at bus garage
- Provide additional parking at bus garage



AGENDA

HOW DID WE GET HERE?

WHAT'S INCLUDED?

HOW MUCH WILL IT COST?

WHAT ARE THE NEXT STEPS?

PLEASE ASK US QUESTIONS

How Much Will It Cost?

• Health, Safety & Accessibility	\$ 6,460,000
• Building Infrastructure	\$13,050,000
• Energy Saving Measures	\$ 4,065,000
• Community/Stakeholder Input	<u>\$ 3,125,000</u>
TOTAL PROJECT COST	\$26,700,000

Funding Sources:

• Capital Reserve	(\$ 1,750,000)
• NYS Building Aid	<u>(\$19,176,000)</u>
• Local Share	\$ 5,774,000
	<u>÷ 15 Years</u>

Annual Local Cost	\$ 385,000
--------------------------	-------------------

**GALWAY CENTRAL
SCHOOL DISTRICT**

Shannon Shine
Superintendent of Schools
518.882.1033 x3220

Turner
Building the Future

CSArch

AGENDA

HOW DID WE GET HERE?

WHAT'S INCLUDED?

HOW MUCH WILL IT COST?

WHAT ARE THE NEXT STEPS?

PLEASE ASK US QUESTIONS

How Much Will It Cost?

Annual Local Cost:	\$385,000
Less:	
Existing Debt	(\$101,508)
Existing Trans. Debt	(\$ 75,643)
Solar PPA Savings	<u>(\$ 59,203)</u>
Net Budget Impact:	\$148,646

Tax Impact = 1.497%

Tax Rate Impact = 0.2254 per \$1,000 assessed

Equal to \$22.54 annually on a home assessed at \$100,000*

Equal to \$45.08 annually on a home assessed at \$200,000

GALWAY CENTRAL SCHOOL DISTRICT

Shannon Shine
Superintendent of Schools
518.882.1033 x3220

Turner
Building the Future

CSArch

AGENDA

HOW DID WE GET HERE?

WHAT'S INCLUDED?

HOW MUCH WILL IT COST?

WHAT ARE THE NEXT STEPS?

PLEASE ASK US QUESTIONS

What Are The Next Steps?

BOE Resolution to vote
(Min. 45 days prior to vote)

March 24, 2016

VOTER REFERENDUM

MAY 17, 2016

Post-Referendum Phase

- | | |
|---|-----------------------|
| • Design & Construction document production | June '16- Feb. '17 |
| • SED Review (Based on a 48 week review) | March '17- Feb.'18 |
| • Bidding Process | March- April 2018 |
| • Award Contract for Construction | May 2018 |
| • Construction Period | June 2018 – Aug. 2019 |

GALWAY CENTRAL SCHOOL DISTRICT

Shannon Shine
Superintendent of Schools
518.882.1033 x3220





THANK YOU!

Questions or Comments?

**GALWAY CENTRAL
SCHOOL DISTRICT**

Shannon Shine
Superintendent of Schools
518.882.1033 x3220

Turner
Building the Future

CSArch